

Aflac Short-Term Disability Insurance

DISABILITY INCOME PROTECTION

We've been dedicated to helping provide peace of mind and financial security for more than 60 years.



AFLAC SHORT-TERM DISABILITY INSURANCE

DISABILITY INCOME PROTECTION

Policy A57600VA and Riders A57650VA, A57651VA, and A57653VA

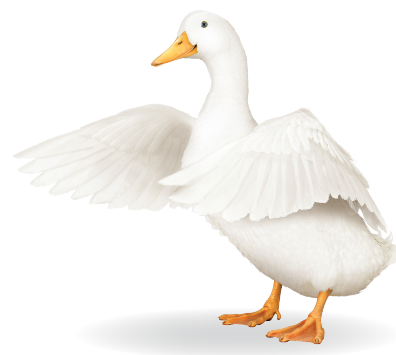


Helping Pay Your Bills, While You Pay Attention to You

What if one day, not very far in the future, you become disabled and you can't go to work. How would you pay for the expenses of daily life such as monthly mortgage or rent, groceries and your utilities? The bills keep on coming even if you're unable to work. That's where Aflac's short-term disability insurance policy can help make the difference. It's a source of monthly income you may need to help take care of your bills while you take care of yourself.

Why Aflac Short-Term Disability may be the best choice for you:

- It's sold on an individual basis. You choose the plan that's right for you based on your financial needs and income.
- We offer the option of guaranteed-issue,¹ short-term disability coverage. That means no medical questionnaire is required.
- We pay you a cash benefit for each day you are disabled.²



Here's how we can help

When disabled, you may not only lose the ability to earn a living, but you may also lose savings or retirement funds. The financial obligations can be overwhelming. Disability insurance plays an integral and important role in your financial planning.

Aflac provides benefits for both total and partial disability. Even if you're able to work, partial disability benefits may be available to help compensate for lost income.

Aflac does not coordinate benefits. Regardless of any other disability insurance you may have, including Social Security, we will pay you directly.

¹Subject to certain conditions.

²Subject to your benefit period and elimination period.

Understand the difference Aflac makes in your financial security.

Aflac pays cash benefits directly to you, unless otherwise assigned. This means that you will have added financial resources to help with expenses incurred due to medical treatment, ongoing living expenses or any purpose you choose.

Coverage Options

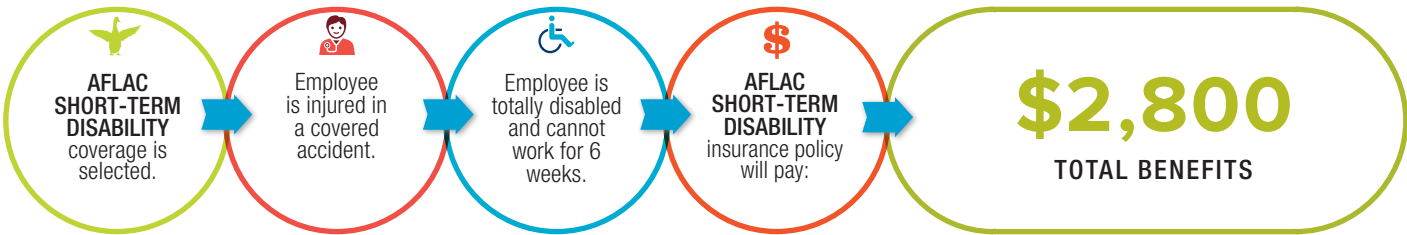
Choose the Policy You Need

BENEFIT	DESCRIPTION
MONTHLY BENEFIT PAYMENT	\$500 to \$6,000 (subject to income requirements)
TOTAL DISABILITY BENEFIT PERIODS	6, 12, 18 or 24 months
PARTIAL DISABILITY BENEFIT PERIOD	3 months
ELIMINATION PERIODS (INJURY/SICKNESS)	0/7, 0/14, 7/7, 7/14, 14/14, 0/30, 30/30, 60/60, 90/90, 180/180
WAIVER OF PREMIUM	Premium waived, month to month, for policy and any applicable rider(s) for as long as you remain disabled, up to the applicable benefit period shown in the Policy Schedule.
OPTIONAL RIDERS	
AFLAC VALUE RIDER	Pays \$1,000 every 5 years while the policy is in force (up to five times), less any disability claims paid or \$100, whichever is greater.
DISABILITY BENEFIT FOR ON-THE-JOB INJURY RIDER	Provides benefits if a disability is caused by a covered on-the-job injury while coverage is in force. Available even with Workers' Compensation.* Benefits payable up to the total disability benefit period selected. Benefit subject to elimination period shown in the Policy Schedule and income requirements.
ADDITIONAL UNITS OF DISABILITY BENEFIT RIDER	Allows you to purchase additional units of disability coverage to add to your existing short-term disability policy. Subject to income requirements.

All benefits are subject to the Limitations and Exclusions, Pre-existing Condition Limitations and other policy terms.

*Subject to certain conditions/maximum.

How it works



The above example is based on a scenario for Aflac Short-Term Disability that includes the following benefit conditions: ages 18–49, employed full-time at the time disability began, \$2,000 monthly disability benefit amount, \$40,000 annual salary, elimination period 0/7 days, 6 month benefit period, benefits based on policy premiums being paid with after-tax dollars.

The policy has limitations and exclusions that may affect benefits payable. For costs and complete details of the coverage, contact your Aflac insurance agent/producer. This brochure is for illustrative purposes only. Refer to the policy for complete benefit details, definitions, limitations and exclusions. Policy Form A57600VA; Rider Forms A57650VA, A57651VA, and A57653VA; and Application Forms A57601RcVA, A57601RVA, A57601RGcVA, and A57601RGVA.

SHORT-TERM DISABILITY COVERAGE

DISABILITY INCOME PROTECTION

American Family Life Assurance Company of Columbus
(herein referred to as Aflac)
Worldwide Headquarters • 1932 Wynnton Road • Columbus, Georgia 31999
1.800.99.AFLAC (1.800.992.3522)

DISABILITY INCOME PROTECTION COVERAGE
Policy Series A57600

- 1. Read Your Policy Carefully.** This document provides a very brief description of the important features of the coverage. This is not the insurance contract, and only the actual policy provisions will control. The policy itself sets forth in detail the rights and obligations of both you and Aflac. It is, therefore, important that you **READ YOUR POLICY CAREFULLY!**

- 2.** Short-term Disability coverage is designed to provide, to persons insured, coverage for disabilities resulting from a covered accident or Sickness, subject to any limitations set forth in the policy. Coverage is not provided for basic hospital, basic medical-surgical, or major medical expenses.

- 3. Benefits.** The following benefits are a part of the policy.

Aflac will pay the following benefits, as applicable, if your Disability is caused by a covered Sickness or covered Off-the-Job Injury and occurs while coverage is in force. All benefits are subject to the Limitations and Exclusions, Pre-existing Condition Limitations, and other policy terms.

Disability due to pregnancy and childbirth is payable to the same extent as a covered Sickness. Disability benefits for childbirth will be payable only after this policy has been in force ten months. The maximum period of Disability allowed for Disability due to childbirth is twelve weeks, unless you furnish proof that your Disability continues beyond twelve weeks. The Elimination Period is not applicable to Disability benefits due to childbirth.

Benefits will be paid for only one Disability at a time, even if the Disability is caused by more than one Sickness, more than one Injury, or a Sickness and an Injury. **We reserve the right to a Physician's statement to determine whether you are qualified to receive Disability benefits or whether you are unable to perform three or more ADLs and require Direct Personal Assistance. You must be under the care and attendance of a Physician for these benefits to be payable. Benefits will cease on the date of your death.**

A. TOTAL DISABILITY BENEFITS:

- 1. Working Full Time:** If you have a Full-Time Job at the time of your Sickness or Off-the-Job Injury, we will insure you as follows while coverage is in force:

If your covered Sickness or covered Off-the-Job Injury causes your Total Disability within 90 days of your last treatment for your covered Sickness or covered Off-the-Job Injury, we will pay you the Daily Disability Benefit for each day of your Total Disability. This benefit is payable up to the Total Disability Benefit Period you selected and is subject to the Elimination Period shown in the Policy Schedule. Also see the Uniform Provision titled "Term," and the definition of "Benefit Period."

You will no longer be qualified to receive this benefit upon the earlier of your: (1) being released by your Physician to perform the material and substantial duties of your Full-

Time Job, or (2) working at any job for which the person is or becomes qualified by reason of education, training or experience.

- 2. Not Working Full Time:** If you do not have a Full-Time Job at the time of your Sickness or Off-the-Job Injury, we will insure you as follows while coverage is in force:

If you are unable to perform three or more ADLs within 90 days of your last treatment that is a result of a covered Sickness or Off-the-Job Injury, as certified by a Physician, and you require Direct Personal Assistance to perform such ADLs, we will pay you the Daily Disability Benefit for each day you cannot perform such ADLs. This benefit is payable up to the Total Disability Benefit Period you selected and is subject to the Elimination Period shown in the Policy Schedule. Also see the Uniform Provision titled "Term," and the definition of "Benefit Period."

You will no longer be qualified to receive this benefit upon the earlier of your: (1) being released by your Physician to perform the material and substantial duties of your Full-Time Job, (2) working at any job for which the person is or becomes qualified by reason of education, training or experience, or (3) Physician no longer being able to certify that you are unable to perform three or more ADLs that require Direct Personal Assistance.

Separate periods of Disability, resulting from the **same or a related condition** and not separated by 180 days or more, are considered a continuation of the prior Disability. Once the maximum Total Disability Benefit Period has been paid, you will not be eligible for a new Total Disability Benefit Period for Disability due to the same or a related condition, until 180 days or more after you: (1) have been released by a Physician from the prior Disability, (2) are no longer disabled, and (3) are no longer qualified to receive any Disability benefits under the policy.

Separate periods of Disability, resulting from **unrelated causes** and not separated by your returning to work at a Full-Time Job for 14 working days during which you are performing the material and substantial duties of such job, are considered a continuation of the prior Disability. Once the maximum Total Disability Benefit Period has been paid, you will not be eligible for a new Total Disability Benefit Period for Disability due to an unrelated cause, until 14 working days after you: (1) have been released by a Physician from a prior Disability, (2) are no longer disabled, and (3) are no longer qualified to receive any Disability benefits under the policy.

Periods of Disability meeting either of these separation requirements will begin a new Total Disability Benefit Period, subject to a new Elimination Period.

- B. PARTIAL DISABILITY BENEFIT:** If you have a Full-Time Job at the time of your Sickness or Off-the-Job Injury, we will insure you as follows while coverage is in force:

If your covered Sickness or covered Off-the-Job Injury causes your Partial Disability within 90 days of your last treatment for your covered Sickness or covered Off-the-Job Injury, we will pay you one-half of the Daily Disability Benefit for each day of your Partial Disability. This benefit is payable up to the Partial Disability Benefit Period (a maximum period of three months) and is subject to the Elimination Period shown in the Policy Schedule. Also see the Uniform Provision titled "Term," and the definition of "Benefit Period."

You will no longer be qualified to receive this benefit upon the earlier of your: (1) being released by your Physician to perform the material and substantial duties of your Full-Time Job, or (2) working at any job for which a person is or becomes qualified by reason of education, training or experience earning 80 percent or more of your pre-Disability Annual Income.

Separate periods of Disability, resulting from the same or a related condition and not separated by 180 days or more, are considered a continuation of the prior Disability. Once the maximum period of three months of Disability under this benefit has been paid, you will not be eligible for a new Partial Disability Benefit Period for Disability due to the same or a related condition, until 180 days or more after you: (1) have been released by a Physician from the prior Disability, (2) are no longer disabled, and (3) are no longer qualified to receive any Disability benefits under the policy.

Separate periods of Disability, resulting from unrelated causes and not separated by your returning to work at a Full-Time Job for 14 working days during which you are performing the material and substantial duties of such job, are considered a continuation of the prior Disability. Once the maximum Partial Disability Benefit Period has been paid, you will not be eligible for a new Partial Disability Benefit Period for Disability due to an unrelated cause, until 14 working days after you: (1) have been released by a Physician from a prior Disability, (2) are no longer disabled, and (3) are no longer qualified to receive any Disability benefits under the policy.

Periods of Disability meeting either of these separation requirements will begin a new Partial Disability Benefit Period (a maximum period of three months), subject to a new Elimination Period.

The Partial Disability Benefit Period is not subject to the Total Disability Benefit Period.

- C. WAIVER OF PREMIUM BENEFIT:** If your covered Sickness or covered Off-the-Job Injury causes your Total Disability or Partial Disability for more than 90 consecutive days (or after the Elimination Period shown in the Policy Schedule, whichever is greater) while the policy is in force, Aflac will waive, from month to month, the premium for the policy and any applicable rider(s) for as long as you remain disabled, up to the applicable Benefit Period shown in the Policy Schedule.

For premiums to be waived, Aflac will require an employer's statement (or proof of your inability to perform three or more ADLs) and a Physician's statement certifying your inability to perform said duties or activities, and may each month thereafter require a Physician's statement that your inability to perform said

duties or activities continues. Aflac may ask for and use an independent consultant to determine your Disability when this benefit is in force.

You must pay all premiums to keep the policy and any applicable rider(s) in force until Aflac approves your claim for this Waiver of Premium Benefit. You must also resume premium payment to keep the policy and any applicable rider(s) in force, beginning with the first premium due after you no longer qualify for Disability benefits.

IF YOU HAVE ANY OTHER DISABILITY BENEFIT IN FORCE WITH US, ONLY ONE DISABILITY BENEFIT IS PAYABLE.

4. OPTIONAL BENEFITS:

Disability Benefit for On-the-Job Injury Rider:
(Series A57650) Applied For: ☐ Yes ☐ No

Aflac will pay the following benefits, as applicable, if your Disability is caused by a covered On-the-Job Injury and occurs while coverage is in force. All benefits are subject to the Limitations and Exclusions, Pre-existing Condition Limitations, and other policy terms.

Benefits will be paid for only one Disability at a time, even if the Disability is caused by more than one Injury. **We reserve the right to a Physician's statement to determine whether you are qualified to receive Disability benefits or whether you are unable to perform three or more ADLs and require Direct Personal Assistance. You must be under the care and attendance of a Physician for these benefits to be payable. Benefits will cease on the date of your death.**

A. TOTAL DISABILITY BENEFITS:

- 1. Working Full Time:** If you have a Full-Time Job at the time of your On-the-Job Injury, we will insure you as follows while coverage is in force:

If your covered On-the-Job Injury causes your Total Disability within 90 days of your last treatment for your covered On-the-Job Injury, we will pay you the Daily Disability Benefit for the On-the-Job Injury Disability Rider for each day of your Total Disability. This benefit is payable up to the Total Disability Benefit Period you selected and is subject to the Elimination Period shown in the Policy Schedule. Also see the Uniform Provision titled "Term," and the definition of "Benefit Period."

You will no longer be qualified to receive this benefit upon the earlier of your: (1) being released by your Physician to perform the material and substantial duties of your Full-Time Job, or (2) working at any job for which the person is or becomes qualified by reason of education, training or experience.

- 2. Not Working Full Time:** If you do not have a Full-Time Job at the time of your On-the-Job Injury, we will insure you as follows while coverage is in force:

If you are unable to perform three or more ADLs within 90 days of your last treatment that is a result of a covered On-the-Job Injury, as certified by a Physician, and you require Direct Personal Assistance to perform such ADLs, we will pay you the Daily Disability Benefit for the On-the-Job Injury Disability Rider for each day you cannot perform such

ADLs. This benefit is payable up to the Total Disability Benefit Period you selected and is subject to the Elimination Period shown in the Policy Schedule. Also see the Uniform Provision titled "Term," and the definition of "Benefit Period."

You will no longer be qualified to receive this benefit upon the earlier of your: (1) being released by your Physician to perform the material and substantial duties of your Full-Time Job, (2) working at any job for which the person is or becomes qualified by reason of education, training or experience, or (3) Physician no longer being able to certify that you are unable to perform three or more ADLs that require Direct Personal Assistance.

Separate periods of Disability, resulting from the **same or a related condition** and not separated by 180 days or more, are considered a continuation of the prior Disability. Once the maximum Total Disability Benefit Period has been paid, you will not be eligible for a new Total Disability Benefit Period for Disability due to the same or a related condition, until 180 days or more after you: (1) have been released by a Physician from the prior Disability, (2) are no longer disabled, and (3) are no longer qualified to receive any Disability benefits under the policy.

Separate periods of Disability, resulting from **unrelated causes** and not separated by your returning to work at a Full-Time Job for 14 working days during which you are performing the material and substantial duties of such job, are considered a continuation of the prior Disability. Once the maximum Total Disability Benefit Period has been paid, you will not be eligible for a new Total Disability Benefit Period for Disability due to an unrelated cause, until 14 working days after you: (1) have been released by a Physician from a prior Disability, (2) are no longer disabled, and (3) are no longer qualified to receive any Disability benefits under the policy.

Periods of Disability meeting either of these separation requirements will begin a new Total Disability Benefit Period, subject to a new Elimination Period.

- B. PARTIAL DISABILITY BENEFIT:** If you have a Full-Time Job at the time of your On-the-Job Injury, we will insure you as follows while coverage is in force:

If your covered On-the-Job Injury causes your Partial Disability within 90 days of your last treatment for your covered On-the-Job Injury, we will pay you one-half of the Daily Disability Benefit for the On-the-Job Injury Disability Rider for each day of your Partial Disability. This benefit is payable up to the Partial Disability Benefit Period (a maximum period of three months) and is subject to the Elimination Period shown in the Policy Schedule. Also see the Uniform Provision titled "Term," and the definition of "Benefit Period."

You will no longer be qualified to receive this benefit upon the earlier of your: (1) being released by your Physician to perform the material and substantial duties of your Full-Time Job, or (2) working at any job for which the person is or becomes qualified by reason of education, training or experience earning 80 percent or more of your pre-Disability Annual Income.

Separate periods of Disability, resulting from the **same or a related condition** and not separated by 180 days or more, are considered a continuation of the prior Disability. Once the

maximum period of three months of Disability under this benefit has been paid, you will not be eligible for a new Partial Disability Benefit Period for Disability due to the same or a related condition, until 180 days or more after you: (1) have been released by a Physician from the prior Disability, (2) are no longer disabled, and (3) are no longer qualified to receive any Disability benefits under the policy.

Separate periods of Disability, resulting from **unrelated causes** and not separated by your returning to work at a Full-Time Job for 14 working days during which you are performing the material and substantial duties of such job, are considered a continuation of the prior Disability. Once the maximum Partial Disability Benefit Period has been paid, you will not be eligible for a new Partial Disability Benefit Period for Disability due to an unrelated cause, until 14 working days after you: (1) have been released by a Physician from a prior Disability, (2) are no longer disabled, and (3) are no longer qualified to receive any Disability benefits under the policy.

Periods of Disability meeting either of these separation requirements will begin a new Partial Disability Benefit Period (a maximum period of three months), subject to a new Elimination Period.

The Partial Disability Benefit Period is not subject to the Total Disability Benefit Period.

- C. WAIVER OF PREMIUM BENEFIT:** If your covered On-the-Job Injury causes your Total Disability or Partial Disability for more than 90 consecutive days (or after the Elimination Period shown in the Policy Schedule, whichever is greater) while the rider is in force, Aflac will waive, from month to month, the premium for the policy and any applicable rider(s) for as long as you remain disabled, up to the applicable Benefit Period shown in the Policy Schedule.

For premiums to be waived, Aflac will require an employer's statement (or proof of your inability to perform three or more ADLs) and a Physician's statement certifying your inability to perform said duties or activities, and may each month thereafter require a Physician's statement that your inability to perform said duties or activities continues. Aflac may ask for and use an independent consultant to determine your Disability when this benefit is in force.

You must pay all premiums to keep the policy and any applicable rider(s) in force until Aflac approves your claim for this Waiver of Premium Benefit. You must also resume premium payment to keep the policy and any applicable rider(s) in force, beginning with the first premium due after you no longer qualify for Disability benefits.

The Waiver of Premium Benefit is not available with a three-month Total Disability Benefit Period.

IF YOU HAVE ANY OTHER DISABILITY BENEFIT IN FORCE WITH US, ONLY ONE DISABILITY BENEFIT IS PAYABLE.

Additional Units of Disability Benefit Rider:
(Series A57651) Applied For: ☐ Yes ☐ No

Aflac will pay the following benefits, as applicable, if your Disability is caused by a covered Sickness or covered Off-the-Job Injury and occurs while coverage is in force. All benefits are

subject to the Limitations and Exclusions, Pre-existing Condition Limitations, and other policy terms.

Disability due to pregnancy and childbirth is payable to the same extent as a covered Sickness. Disability benefits for childbirth will be payable only after the rider has been in force ten months. The maximum period of Disability allowed for Disability due to childbirth is twelve weeks, unless you furnish proof that your Disability continues beyond twelve weeks. The Elimination Period is not applicable to Disability benefits due to childbirth.

Benefits will be paid for only one Disability at a time, even if the Disability is caused by more than one Sickness, more than one Injury, or a Sickness and an Injury. **We reserve the right to a Physician's statement to determine whether you are qualified to receive Disability benefits or whether you are unable to perform three or more ADLs and require Direct Personal Assistance. You must be under the care and attendance of a Physician for these benefits to be payable. Benefits will cease on the date of your death.**

This benefit will be paid under the same terms as the applicable Total Disability Benefit or Partial Disability Benefit as described in your policy. The additional units of coverage will only be payable for a Disability that begins after the Effective Date of the rider.

A. TOTAL DISABILITY BENEFITS:

- 1. Working Full Time:** If you have a Full-Time Job at the time of your Sickness or Off-the-Job Injury, we will insure you as follows while coverage is in force:

If your covered Sickness or covered Off-the-Job Injury causes your Total Disability within 90 days of your last treatment for your covered Sickness or covered Off-the-Job Injury, we will pay you the Daily Disability Benefit for the Additional Units of Disability Benefit Rider for each day of your Total Disability. This benefit is payable up to the Total Disability Benefit Period you selected and is subject to the Elimination Period shown in the Policy Schedule. Also see the Uniform Provision titled "Term," and the definition of "Benefit Period."

You will no longer be qualified to receive this benefit upon the earlier of your: (1) being released by your Physician to perform the material and substantial duties of your Full-Time Job, or (2) working at any job for which the person is or becomes qualified by reason of education, training or experience.

- 2. Not Working Full Time:** If you do not have a Full-Time Job at the time of your Sickness or Off-the-Job Injury, we will insure you as follows while coverage is in force:

If you are unable to perform three or more ADLs within 90 days of your last treatment that is a result of a covered Sickness or Off-the-Job Injury, as certified by a Physician, and you require Direct Personal Assistance to perform such ADLs, we will pay you the Daily Disability Benefit for the Additional Units of Disability Benefit Rider for each day you cannot perform such ADLs. This benefit is payable up to the Total Disability Benefit Period you selected and is subject to the Elimination Period shown in the Policy Schedule. Also see the Uniform Provision titled "Term," and the definition of "Benefit Period."

You will no longer be qualified to receive this benefit upon the earlier of your: (1) being released by your Physician to perform the material and substantial duties of your Full-Time Job, (2) working at any job for which the person is or becomes qualified by reason of education, training or experience, or (3) Physician no longer being able to certify that you are unable to perform three or more ADLs that require Direct Personal Assistance.

Separate periods of Disability, resulting from the **same or a related condition** and not separated by 180 days or more, are considered a continuation of the prior Disability. Once the maximum Total Disability Benefit Period has been paid, you will not be eligible for a new Total Disability Benefit Period for Disability due to the same or a related condition, until 180 days or more after you: (1) have been released by a Physician from the prior Disability, (2) are no longer disabled, and (3) are no longer qualified to receive any Disability benefits under the policy.

Separate periods of Disability, resulting from **unrelated causes** and not separated by your returning to work at a Full-Time Job for 14 working days during which you are performing the material and substantial duties of such job, are considered a continuation of the prior Disability. Once the maximum Total Disability Benefit Period has been paid, you will not be eligible for a new Total Disability Benefit Period for Disability due to an unrelated cause, until 14 working days after you: (1) have been released by a Physician from a prior Disability, (2) are no longer disabled, and (3) are no longer qualified to receive any Disability benefits under the policy.

Periods of Disability meeting either of these separation requirements will begin a new Total Disability Benefit Period, subject to a new Elimination Period.

- B. PARTIAL DISABILITY BENEFIT:** If you have a Full-Time Job at the time of your Sickness or Off-the-Job Injury, we will insure you as follows while coverage is in force:

If your covered Sickness or covered Off-the-Job Injury causes your Partial Disability within 90 days of your last treatment for your covered Sickness or covered Off-the-Job Injury, we will pay you one-half of the Daily Disability Benefit for the Additional Units of Disability Benefit Rider for each day of your Partial Disability. This benefit is payable up to the Partial Disability Benefit Period (a maximum period of three months) and is subject to the Elimination Period shown in the Policy Schedule. Also see the Uniform Provision titled "Term," and the definition of "Benefit Period."

You will no longer be qualified to receive this benefit upon the earlier of your: (1) being released by your Physician to perform the material and substantial duties of your Full-Time Job, or (2) working at any job for which the person is or becomes qualified by reason of education, training or experience earning 80 percent or more of your pre-Disability Annual Income.

Separate periods of Disability, resulting from the **same or a related condition** and not separated by 180 days or more, are considered a continuation of the prior Disability. Once the maximum period of three months of Disability under this benefit has been paid, you will not be eligible for a new Partial Disability Benefit Period for Disability due to the same or a related condition, until 180 days or more after you: (1) have been

released by a Physician from the prior Disability, (2) are no longer disabled, and (3) are no longer qualified to receive any Disability benefits under the policy.

Separate periods of Disability, resulting from **unrelated causes** and not separated by your returning to work at a Full-Time Job for 14 working days during which you are performing the material and substantial duties of such job, are considered a continuation of the prior Disability. Once the maximum Partial Disability Benefit Period has been paid, you will not be eligible for a new Partial Disability Benefit Period for Disability due to an unrelated cause, until 14 working days after you: (1) have been released by a Physician from a prior Disability, (2) are no longer disabled, and (3) are no longer qualified to receive any Disability benefits under the policy.

Periods of Disability meeting either of these separation requirements will begin a new Partial Disability Benefit Period (a maximum period of three months), subject to a new Elimination Period.

The Partial Disability Benefit Period is not subject to the Total Disability Benefit Period.

Aflac Value Rider:

(Series A57653) Applied For: ☐ Yes ☐ No

Aflac will pay you the greater of:

- (i) \$1,000 less any claims paid (excluding any Waiver of Premium Benefit paid under the policy; or
- (ii) \$100

at the end of every consecutive five-year period from the rider Effective Date for which the rider remains in force. Each subsequent consecutive five-year period begins on the day after the previous consecutive five-year period ends. If you receive this Aflac Value Benefit and later file a claim that includes days of Disability occurring during the consecutive five-year period that qualified you to receive this Aflac Value Benefit, then we will reduce the amount payable for those days of Disability by the amount you received under the rider less \$100.

Both the policy and the rider must remain in force for five consecutive years for you to be eligible for the Aflac Value Benefit. If the rider is issued after the Effective Date of the policy, the initial consecutive five-year period begins on the rider Effective Date. This benefit is limited to five payments per lifetime.

The rider will terminate on the earlier of: (1) the termination of the policy to which the rider is attached (subject to the Grace Period Provision listed in the policy); (2) your failure to pay the premiums for the rider; (3) your receipt of five payments under the rider; (4) your age at the time of any payment under the rider is 70 or greater and your policy will terminate before any subsequent payment under the rider is due; or (5) your death. When the rider terminates (is no longer in force), no further premium will be charged for it.

IMPORTANT PROVISIONS OF THE POLICY

LIMITATIONS AND EXCLUSIONS

- A.** Disability caused by a Pre-existing Condition will not be covered unless it begins 12 months after the Effective Date of coverage.
- B.** Aflac will not pay benefits for an illness, disease, infection, or disorder that is diagnosed or treated by a Physician within the first 30 days

after the Effective Date of coverage, unless the resulting Disability begins more than 30 days after the Effective Date of coverage.

- C.** Aflac will not pay benefits for a Disability that is being treated outside the territorial limits of the United States.
- D.** Aflac will not pay benefits whenever coverage provided by the policy is in violation of any U.S. economic or trade sanctions. If the coverage violates U.S. economic or trade sanctions, such coverage shall be null and void.
- E.** Aflac will not pay benefits whenever fraud is committed in making a claim under this coverage for which you received benefits that were not lawfully due and that fraudulently induced payment.
- F.** Aflac will not pay benefits for a Disability that is caused by or occurs as a result of any bacterial, viral, or micro-organism infection or infestation, or any condition resulting from insect, arachnid, or other arthropod bites or stings as a Disability due to an Injury; such disability will be covered to the same extent as a Disability due to Sickness.
- G. Aflac will not pay benefits for a disability that is caused by or occurs as a result of your:**

- 1. Pregnancy or childbirth within the first ten months of the Effective Date of coverage (Complications of Pregnancy will be covered to the same extent as a Sickness);
- 2. Participating in any activity or event, including the operation of a vehicle, while under the influence of any narcotic unless taken on the advice of a Physician or while intoxicated ("intoxicated" means that condition as defined by the law of the jurisdiction in which the accident occurred);
- 3. Participating in, or attempting to participate in, an illegal activity that is defined as a felony, whether charged or not ("felony" is as defined by the law of the jurisdiction in which the activity takes place);
- 4. Intentionally self-inflicting a bodily injury, or committing or attempting suicide, while sane or insane;
- 5. Having cosmetic surgery or other elective procedures that are not Medically Necessary (cosmetic surgery shall not include reconstructive surgery when such service is incidental to or follows surgery resulting from trauma, infection or other diseases of the involved part, and reconstructive surgery because of congenital disease or anomaly of a covered dependent child which has resulted in a functional defect);
- 6. Having dental treatment, except as a result of Injury;
- 7. Being exposed to war or any act of war, declared or undeclared or actively serving in any of the armed forces, or units auxiliary thereto, including the National Guard or Reserve (Aflac will upon receipt of written notice of military service, refund all premiums as is applicable to such persons on a pro rata basis);
- 8. Donating an organ within the first 12 months of the Effective Date of the policy;
- 9. Mental or emotional disorders, including but not limited to the following: bipolar affective disorder (manic-depressive syndrome), delusional (paranoid) disorders, psychotic disorders, somatoform disorders (psychosomatic illness), eating disorders, schizophrenia, anxiety disorders, depression, stress, or post-partum depression. The policy will pay, however, for covered

disabilities resulting from Alzheimer's disease, or similar forms of senility or senile dementia, that manifests itself while coverage is in force;

10. Work related Injuries.

Benefits will be paid for only one Disability at a time, even if the Disability is caused by more than one Sickness, more than one Injury, or a Sickness and an Injury.

PRE-EXISTING CONDITION LIMITATIONS: A "Pre-existing Condition" is an illness, disease, infection, disorder, or injury for which, within the 12-

month period before the Effective Date of coverage, medical advice, consultation, or treatment was recommended or received, or for which symptoms existed that would ordinarily cause a prudent person to seek diagnosis, care, or treatment. Disability caused by a Pre-existing Condition will not be covered unless it begins 12 months after the Effective Date of coverage.

Renewability. The policy is guaranteed-renewable to age 75 by payment of the premium in effect at the beginning of each renewal period. Premium rates may be changed only if changed on all policies of the same form number and class in force in your state.

RETAIN FOR YOUR RECORDS.

THIS IS ONLY A BRIEF SUMMARY OF THE COVERAGE PROVIDED.

REFER TO THE POLICY AND RIDER(S) FOR COMPLETE DEFINITIONS, DETAILS, LIMITATIONS AND EXCLUSIONS.

TERMS YOU NEED TO KNOW

ACTIVITIES OF DAILY LIVING (ADLs): BATHING: washing oneself by sponge bath or in either a tub or shower, including the task of getting into or out of the tub or shower; MAINTAINING CONTINENCE: controlling urination and bowel movements, including your ability to use ostomy supplies or other devices such as catheters; TRANSFERRING: moving between a bed and a chair, or a bed and a wheelchair; DRESSING: putting on and taking off all necessary items of clothing; TOILETING: getting to and from a toilet, getting on and off a toilet, and performing associated personal hygiene; EATING: performing all major tasks of getting food into your body.

DAILY DISABILITY BENEFIT: one-thirtieth of the applicable monthly disability benefit shown in the Policy Schedule.

EFFECTIVE DATE: the date(s) coverage begins as shown in the Policy Schedule. The effective date of the policy is not the date you signed the application for coverage.

FULL-TIME JOB: one job at which you work 19 or more hours per week for one employer for pay or benefits.

INJURY: a bodily injury caused directly by an accident, independent of sickness, disease, bodily infirmity, or any other cause, occurring on or after the effective date of coverage and while coverage is in force.

OFF-THE-JOB INJURY: an injury that occurs while you are not working at any job for which the person is or becomes qualified by reason of education, training or experience for pay or benefits.

ON-THE-JOB INJURY: an injury that occurs while you are working at any job for pay or benefits.

PARTIAL DISABILITY: being under the care and attendance of a physician due to a condition that causes you to be unable to perform one or more but not all of the material and substantial duties of your full-time job, but able to work at any job for which the person is or becomes qualified by reason of education, training or experience earning less than 80 percent of your annual income of your full-time job at the time you became disabled.

SICKNESS: an illness, disease, infection, or any other abnormal physical condition, independent of injury, that is manifested and treated more than 30 days after the effective date of coverage and while coverage is in force.

TOTAL DISABILITY: being under the care and attendance of a physician due to a condition that causes you to be unable to perform the material and substantial duties of your full-time job, and not working at any job for which you are qualified for by reason of education, training or experience.

ADDITIONAL INFORMATION

Complications of pregnancy do not include premature delivery without incidence, multiple gestation pregnancy, false labor, occasional spotting, prescribed rest during pregnancy, morning sickness, and similar conditions associated with the management of a difficult pregnancy not

constituting a classifiably distinct pregnancy complication. Cesarean deliveries are not considered complications of pregnancy.

A physician does not include you or a member of your immediate family.





aflac.com || 1.800.99.AFLAC (1.800.992.3522)

Underwritten by:
American Family Life Assurance Company of Columbus
Worldwide Headquarters | 1932 Wynnton Road | Columbus, Georgia 31999

